

AA 53 T2 2,2kW (255280160)

GENERAL DATA



HIGH PRESSURE WITH ALUMINIUM FORWARD IMPELLER

MANUFACTURING FEATURES:

- Rolling steel sheet housing.
 - Fully welded housing.
 - High efficiency simple inlet forward curved impeller manufactured in cast aluminium.
 - Polyester powder finishing coat.
 - Standard asynchronous squirrel-cage motor with IP-55 protection and class F insulation.
- Standard voltages 230/400V 50Hz motors up to 4kW and 400/690V 50Hz for higher powers.

- Available positions (to be indicated in case of order): LG270, LG0, LG45, LG90, LG135, LG180, LG225, LG315.
- The indicated codes correspond to the model in position LG270

APPLICATIONS:

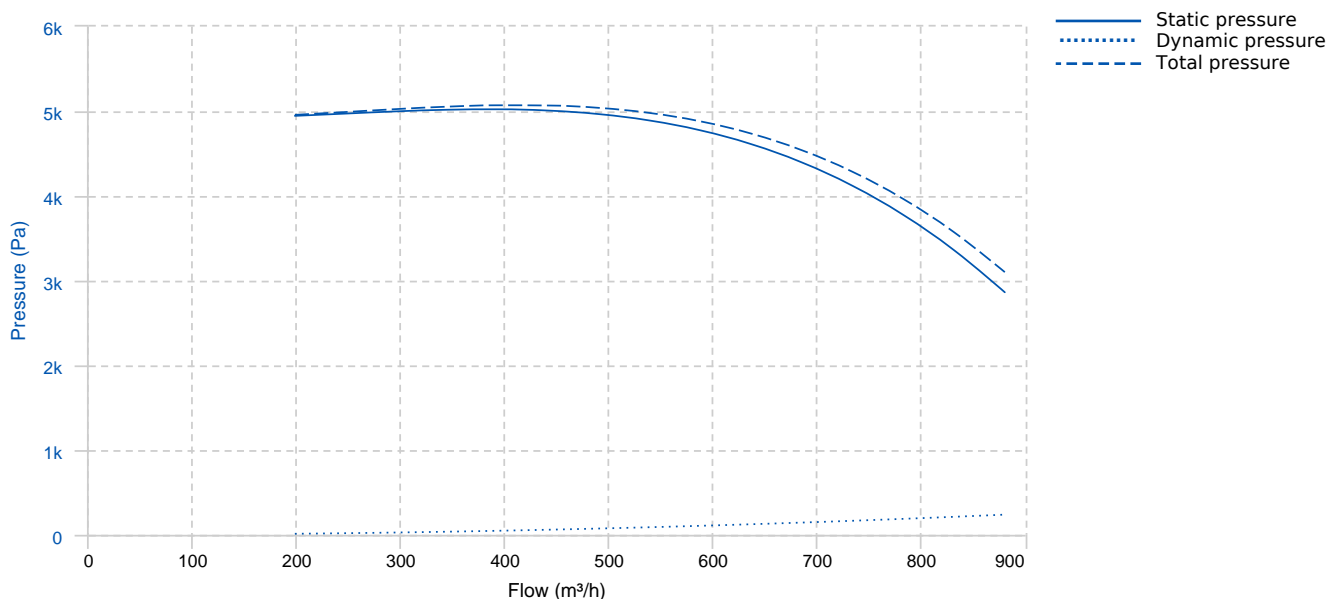
Designed for inline installation, they are suitable for:

- Industrial applications, extraction or injection of air.
- Cooling of machines and parts.
- Clean air transport.
- Exhaust after filters, separators and cyclones.
- Pneumatic transport.
- Maximum working temperature: carried air: 130°C, ambient 60°C.

UNDER REQUEST:

- 60Hz fans and special voltages.
- 2 speed motors.

PERFORMANCE CURVE

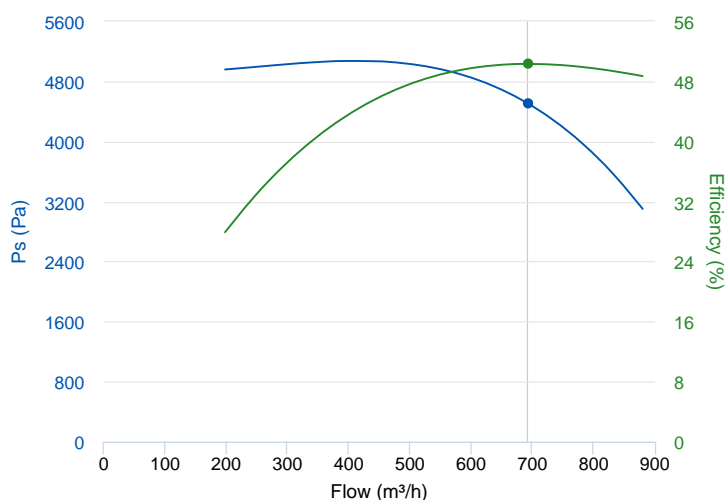


TECHNICAL DATA

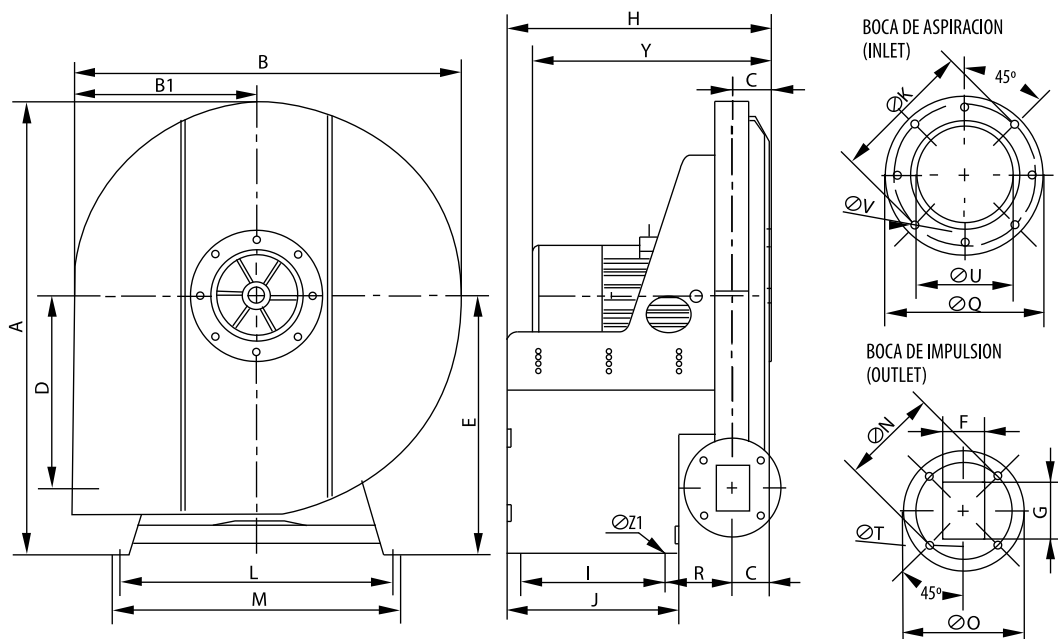
Fan							
RPM	2840	Approx. weight	67 kg	Max. Flow	890 m ³ /h		
Motor							
Power	2,2 kW	RPM	2840	I max. (230V)	7,97 A	I max. (400V)	4,58 A
Size	90L	Approx. weight	25 kg	Efficiency (%)	85.9 %	FP	0.83

ERP DATA

Fan data sheet		
Fan type	Centrifugal fan radial or forward blades	
Installation category	B: Inlet free, Ducted outlet	
Efficiency category	Total	
The fan has to be installed with VF	No	
Motor power (kW)	2.2	
	Fan values	ERP Requirements 2015
Max. efficiency (%)	50.32	44.8
Efficiency grade (N)	54.52	49
Pabs (kW)	2.174	
Flow (m ³ /h)	693.54	
Total pressure (Pa)	4501.75	
Speed (m/s)	2840	
Specific ratio	1.00	



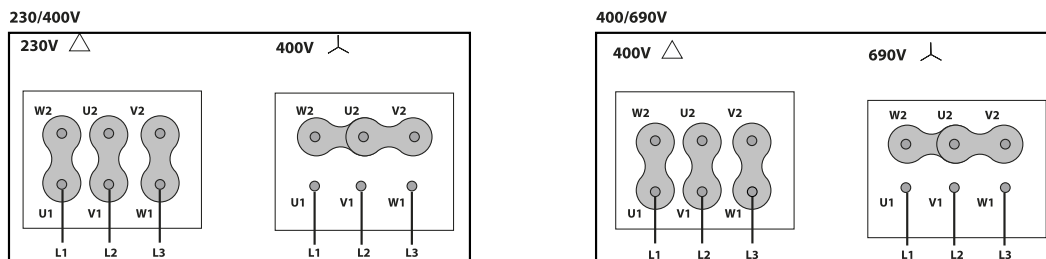
DIMENSIONS



Dimensions (mm)

A	698	B	609	B1	288,5	C	70	D	300
E	395	F	60	G	70	H	392	I	185
J	235	KØ	190	L	410	M	435	NØ	132
OØ	168	QØ	215	R	112	TØ	11	UØ	125
VØ	12	Y	422	Z1	11				

WIRING DIAGRAM



ACCESSORIES



SAFETY SWITCH
INT 25 3P A
REF: INT253PA



INLET PROTECTION GUARD FOR CENTRIFUGAL FANS
RA 16/6
REF: A-253111901



CIRCULAR OUTLET CONNECTION FLANGE
EI 47
REF: 962470111



ANTI-VIBRATING FLANGE 400°/2H
BA-400 15/16
REF: 960002067



ANTI-VIBRATION JOINT
JE 45
REF: 300719201



CONNECTION FLANGE
AC 150
REF: 960003204



OUTLET PROTECTION GUARD
RBS 47
REF: A-960000374



FREQUENCY SPEED CONTROLLER
SFC 230 I 10A *
REF: SFC230I0010



FREQUENCY SPEED CONTROLLER
SFC 400 III 5A *
REF: SFC400III5

ANTI-VIBRATION RUBBER BLOCK
AVR (GENERIC)

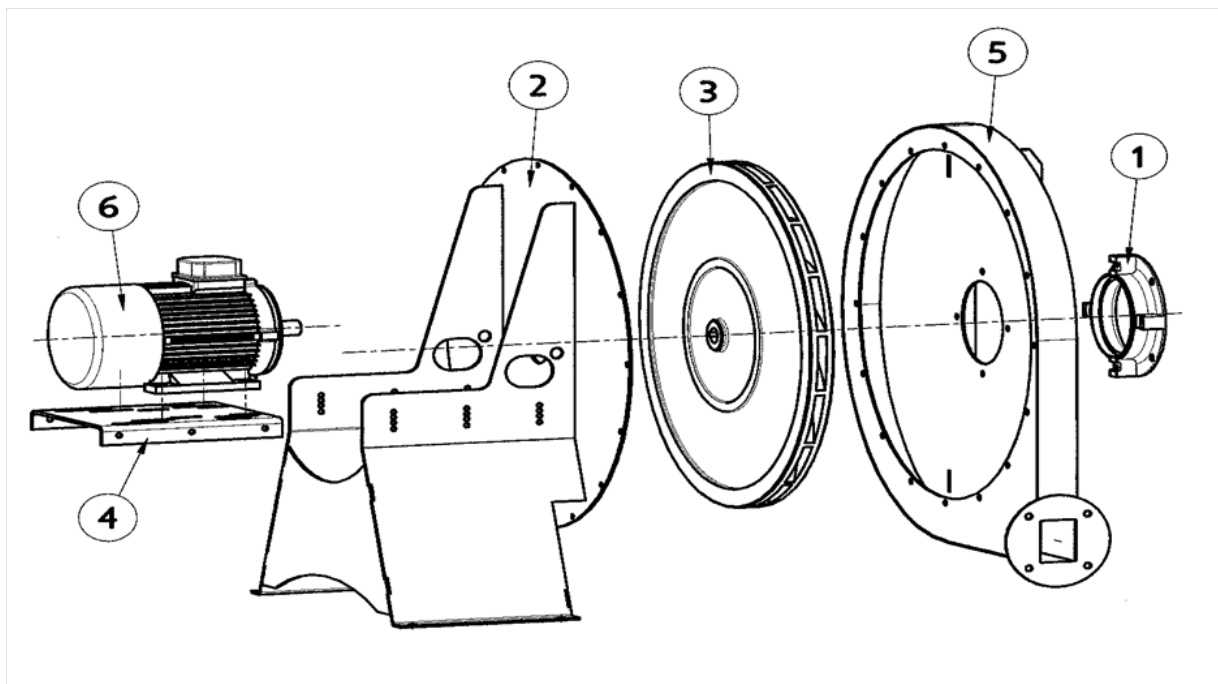


ANTI-VIBRATION SPRING BLOCK
AVS (GENERIC)



ACOUSTIC CABINS FOR CENTRIFUGAL FANS
AB (GENERIC)

SPARE PARTS



	Code	Model	Qty
1	R-255251681	INLET CONE AA 53	x1
2	R-255259204	BASE SUPPORT MOTOR AA53	x1
3	R-255283651	TURBINE AA 53 T2 2,2kW LG	x1
4	R-255141753	MOTOR SUPPORT AA47-53(T71-90)	x1
5	R-255259421	CASING AA53	x1



	Code	Model	Qty
6	721001053	MOTOR 2,2kW T2 B3 230/400V	x1