

## AAVA 802/P T2 5,5kW (std) (502408034)

### GENERAL DATA



#### HIGH PRESSURE WITH BACKWARD IMPELLER

##### MANUFACTURING FEATURES:

- Fan made of Fe360 sheet. The fan paint finish is based on a Qualicoat polyester powder coating stoved at 200°C, with an average film thickness of 70 microns. Average heat resistance of coating is 180°C with peaks of 200°C.
- Fully welded housing.
- High efficiency simple inlet backward impeller with self-cleaning system made of Fe360 sheet statically and dynamically balanced. Impellers are painted with polyester primer that resists temperatures up to 300°C.
- Standard asynchronous squirrel-cage motor with IP-55 protection and class F insulation. Manufactured with standard voltages: 230/400V 50Hz in three phase motors up to 4kW and 400/690V 50Hz for higher powers.
- It allows adjusting the orientation locally from models 220 to 630. Models sizes from 710 to 1000 size the orientation is fixed.
  
- Available positions (to be indicated in case of order): LG270, LG0, LG45, LG90, LG135, LG180, LG225, LG315, RD0, RD45, RD90, RD135, RD180, RD225, RD270, RD315.
- The indicated codes correspond to the model in position LG270

##### APPLICATIONS:

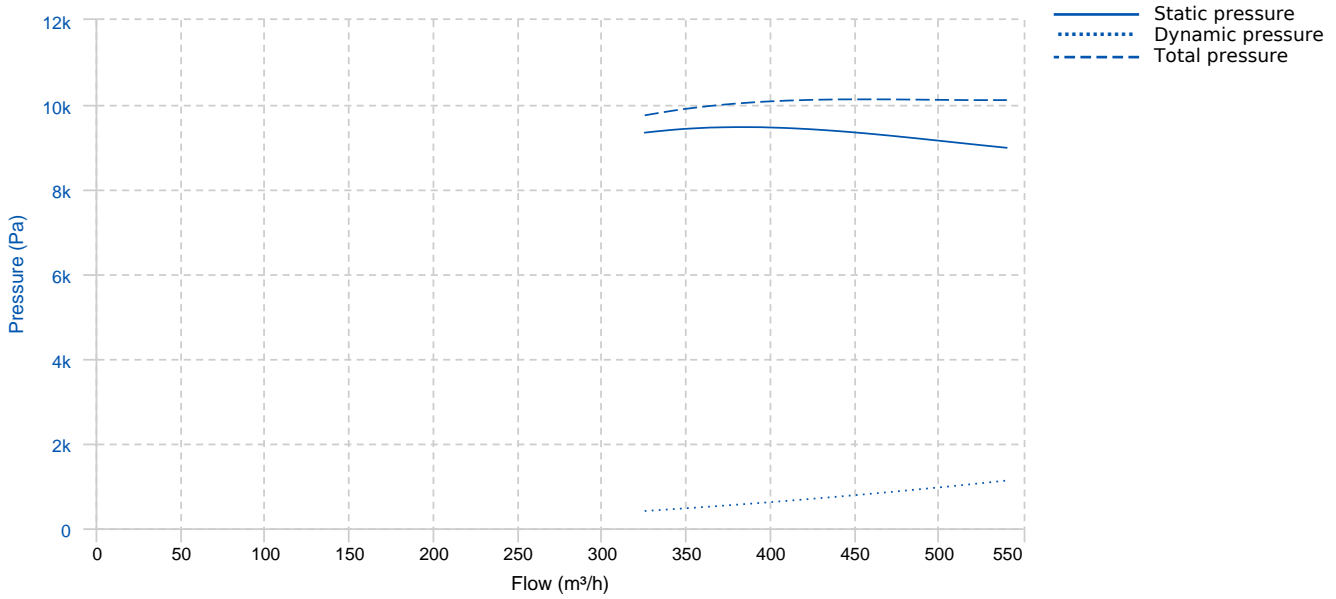
Designed for inline installation, they are suitable for:

- Industrial applications, extraction or injection of air.
- Cooling of machines and parts.
- Clean air transport.
- Exhaust after filters, separators and cyclones.
- Pneumatic transport.
- Maximum working temperature: carried air: 130°C, ambient: 60°C.

##### UNDER REQUEST

- Fans for 60Hz and special voltages.
- 2 speed motor.
- C4 coating painting
- Hot dip galvanized
- Special steel (Cor-Ten A, Hardox...)
- Inox 304 (normal or electropolished finish)
- Inox 316 (normal or electropolished finish)
- Cooling wheel
- Anticaloric paint
- Reinforced housing
- Fully welded housing (waterproof)
- Insulated housing
- Split casing (for big sizes)
- Inspection door to facilitate maintenance and cleaning
- Drain plug.
- Airtight axle
- Frontal foot
- Double suction flange
- Available in non-sparking air passage and standard motor.
- Other brands of motors.

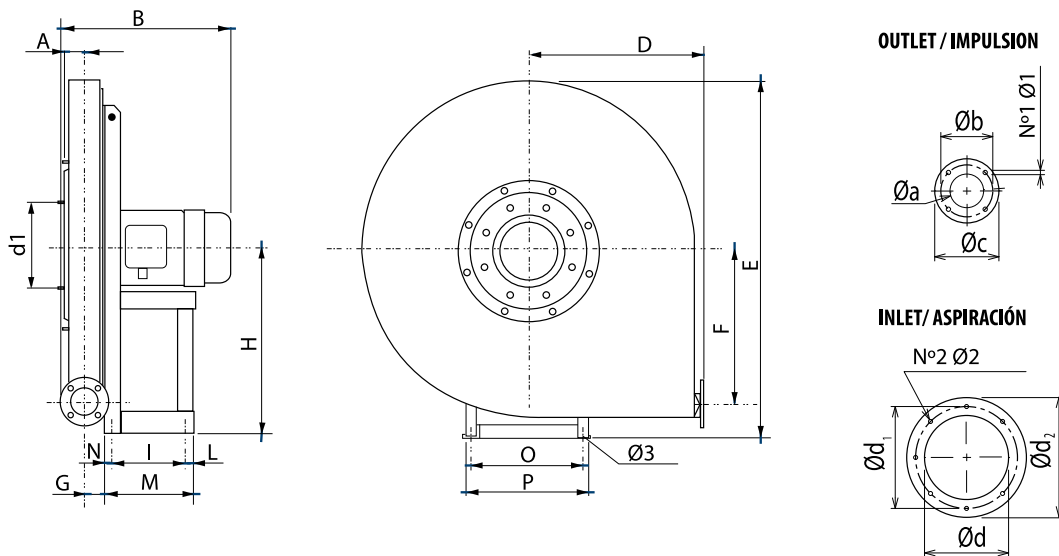
## PERFORMANCE CURVE



## TECHNICAL DATA

Fan							
RPM	2910	Approx. weight	197 kg	Max. Flow	550 m³/h		
Motor							
Power	5,5 kW	RPM	2910	I max. (400V)	10,6 A	I max. (690V)	6,14 A
Size	132S	Approx. weight	68 kg	Efficiency (%)	89.2 %	FP	0.85

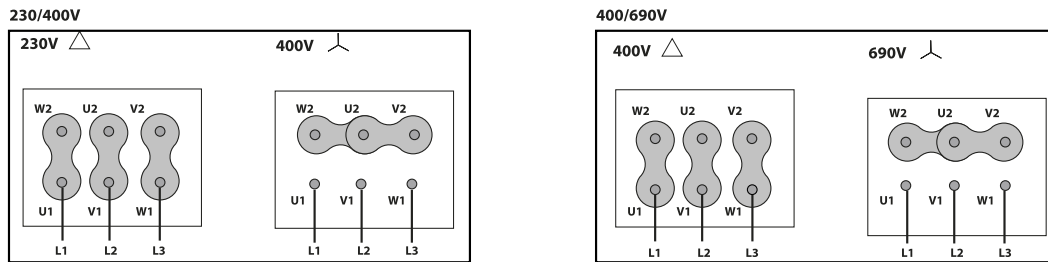
## DIMENSIONS



## Dimensions (mm)

A	40	B	460	D	505	E	1035	F	450
G	38	H	530	I	197	L	49	M	276
N	30	N1xØ1	4x8,5	N2xØ2	Nº8 M6x20	O	289	P	324
Ø3	12	Øa	66	Øb	102	Øc	126	Ød	165
Ød1	200	Ød2	235						

## WIRING DIAGRAM



## ACCESSORIES



**SAFETY SWITCH**  
INT 25 3P A  
REF: INT253PA



**ANTI-VIBRATING FLANGE 400º/2H**  
BA-400 20  
REF: 960002066



**ANTI-VIBRATION JOINT**  
JE 45  
REF: 300719201



**CONNECTION FLANGE**  
AC 175  
REF: 960003205



**INLET PROTECTION GUARD FOR CENTRIFUGAL FANS**  
RA 165x8  
REF: 510001600



**OUTLET PROTECTION GUARD FOR FANS**  
RI 66x4  
REF: 510100600



**CIRCULAR OUTLET CONNECTION FLANGE**  
EI 66x4-66  
REF: 510200600



**FREQUENCY SPEED CONTROLLER**  
SFC 400 III 12A \*  
REF: SFC400III12



**ANTI-VIBRATION RUBBER BLOCK**  
AVR (GENERIC)

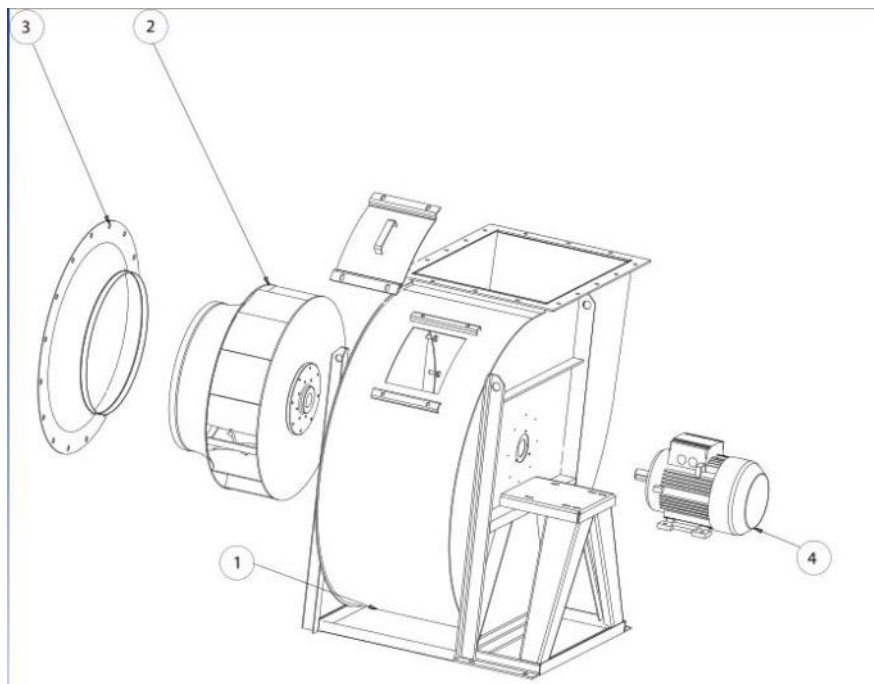


**ANTI-VIBRATION SPRING BLOCK**  
AVS (GENERIC)



**ACOUSTIC CABINS FOR CENTRIFUGAL FANS  
AB (GENERIC)**

**SPARE PARTS**



	Code	Model	Qty
2	T02408034	TURBINE AAVA 802/P LG	x1
3	505608000SP04	INLET CONE AAVA-AATVA 800/P	x1
4	721001072	MOTOR 5,5kW T2 B3 400/690V	x1