

# BVFC 18/18 5,5kW 800rpm (242450195R080)

## GENERAL DATA



### BOX FAN WITH FORWARD IMPELLER AND BELT TRASMISSION - 400°C/2h

#### MANUFACTURING FEATURES:

- Fans in thermal and soundproofing cabinets.
- Double inlet forward curved impeller.
- Transmission set outside the airstream including the belts protection grid.
- Standard asynchronous squirrel-cage motor with IP-55 protection and Class F insulation. Manufactured with standard voltages: 230/400V 50Hz in three phase motors up to 4kW and 400/690V 50Hz for higher powers. 2 speed motors 400V 50Hz

#### APPLICATIONS:

Designed for inline installation, indoor or outdoor assembly, they are suitable for:

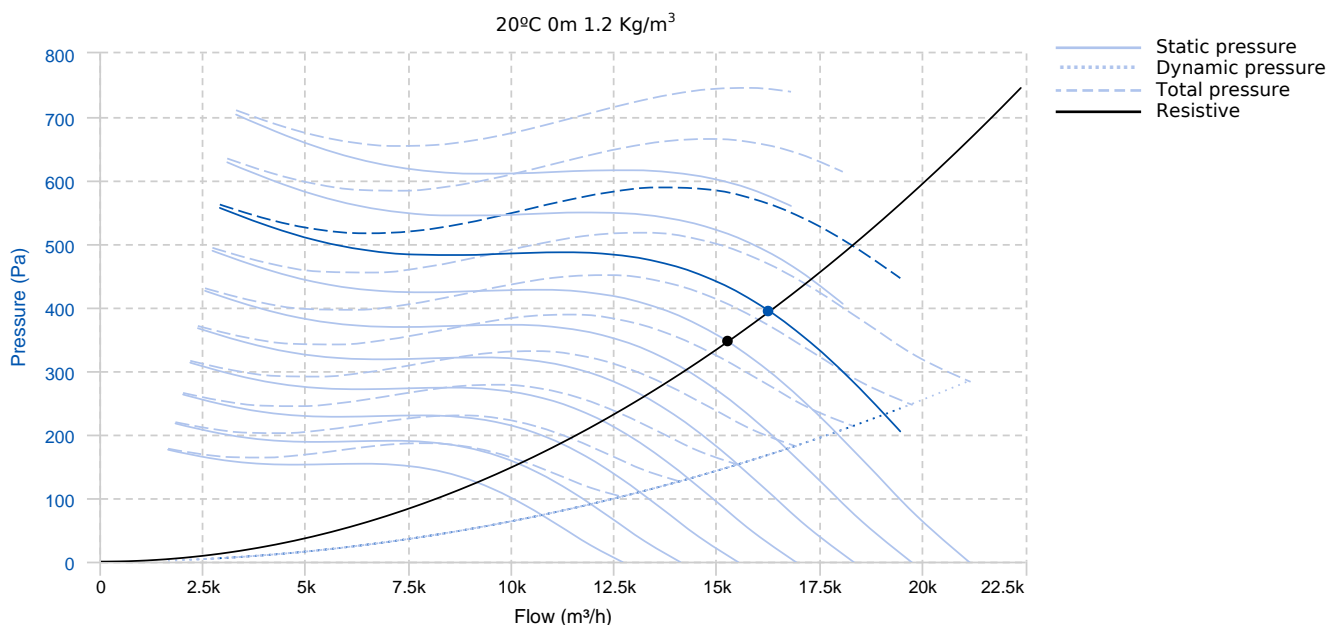
- Smoke emergency exhaust with motor outside the hazardous area.
- Industrial and professional kitchen hoods.
- Maximum working temperature: carried air: 110°C, ambient: 60°C.

#### UNDER REQUEST:

- 60Hz fans and special voltages.
- Vertical discharge.
- 2 Speed

Official homologation by the European laboratory APPLUS according to EN 12101-3:2015 Certification Nr: 0370-CPR-0723

## PERFORMANCE CURVE



### Design point

Flow (m <sup>3</sup> /h)	15264.83	Pressure (Pa)	346.84
--------------------------	----------	---------------	--------

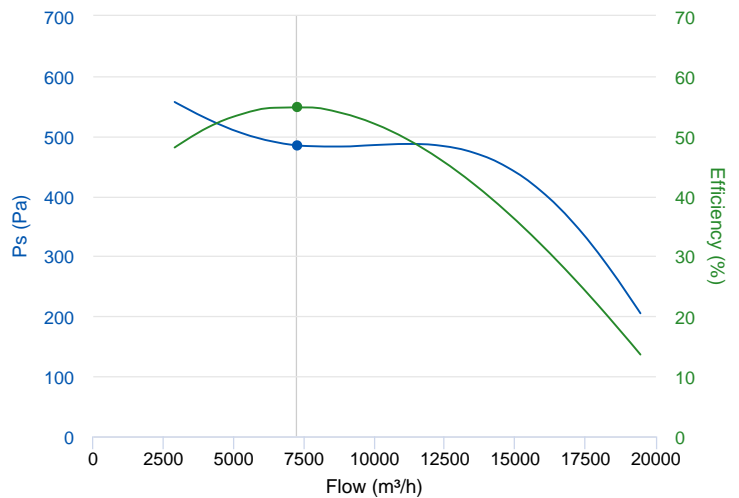
Service point							
Speed	800rpm	T.max (°C)	60	Q (m³/h)	16267.55	Ps (Pa)	393.9
Pd (Pa)	168.73	Pt (Pa)	562.63	Speed (m/s)	16.77	Security coefficient	1.27
Fan total efficiency	52.2	Mechanical total efficiency	58.17	Pabs (kW) 1.2 kg/m³	4.83	Pw.mec (kW)	4.33
Precom (kW)	5,5	SFP (W/l/s) 1.2 kg/m³	1.07				

## TECHNICAL DATA

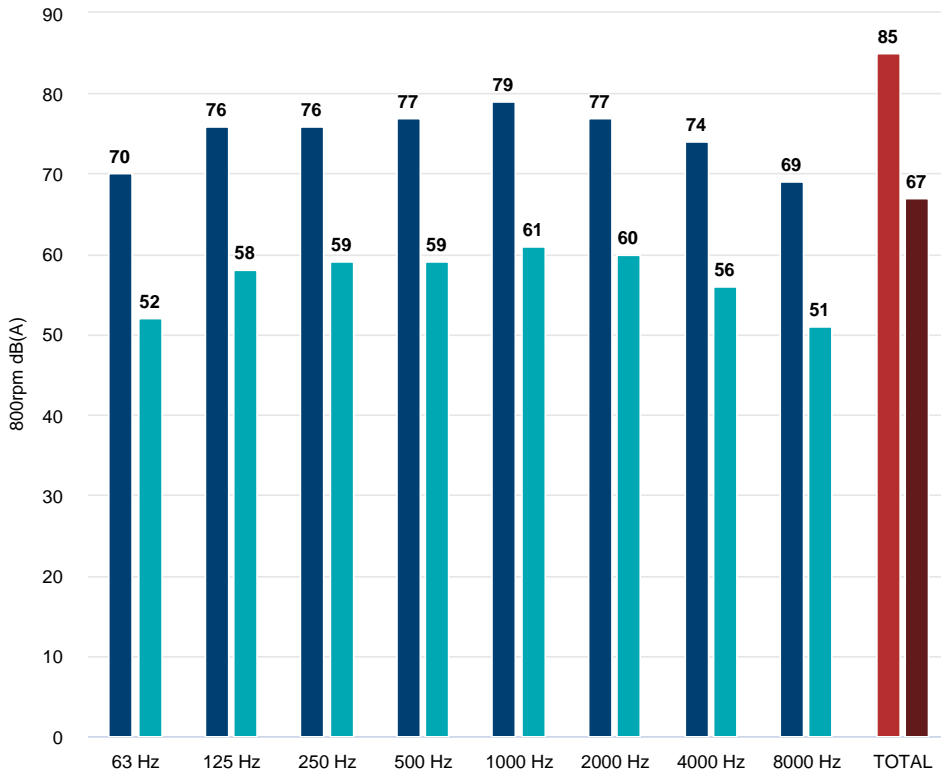
Fan							
RPM	800	Approx. weight	182 kg	Max. Flow	21170 m³/h		
Motor							
Power	5,5 kW	RPM	1460	I max. (400V)	10,5 A	I max. (690V)	6,09 A
Size	132S	Approx. weight	67 kg	Efficiency (%)	89.6 %	FP	0.86

## ERP DATA

Fan data sheet		
Fan type	Unit for non-residential ventilation (LOT 6)	
Typology	Unidirectional	
reports.other	None	
Type of driver	None	
Motor power (kW)	5.5	
	Fan values	ERP Requirements 2018
Max. efficiency (%)	54.86	45.62
Effic. Heat recovery (%)	-	
Pabs (kW)	1.792	
Flow (m³/h)	7244.91	
Static pressure (Pa)	485.02	
Speed (m/s)	7.47	
SFP (W/m3/s)	890.6	



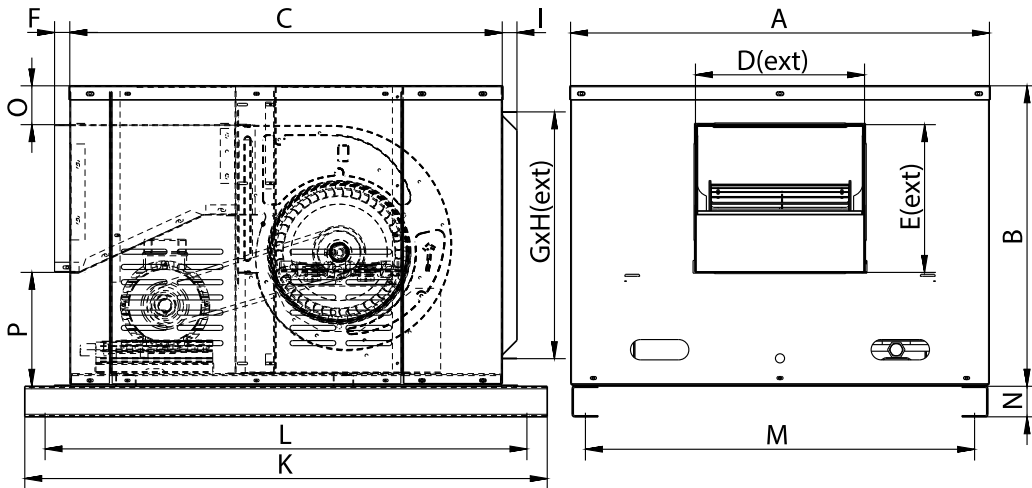
## ACOUSTIC DATA (INLET)



Sound power	
63 Hz	70
125 Hz	76
250 Hz	76
500 Hz	77
1000 Hz	79
2000 Hz	77
4000 Hz	74
8000 Hz	69
TOTAL	85

Sound pressure 3m Q=2	
63 Hz	52
125 Hz	58
250 Hz	59
500 Hz	59
1000 Hz	61
2000 Hz	60
4000 Hz	56
8000 Hz	51
TOTAL	67

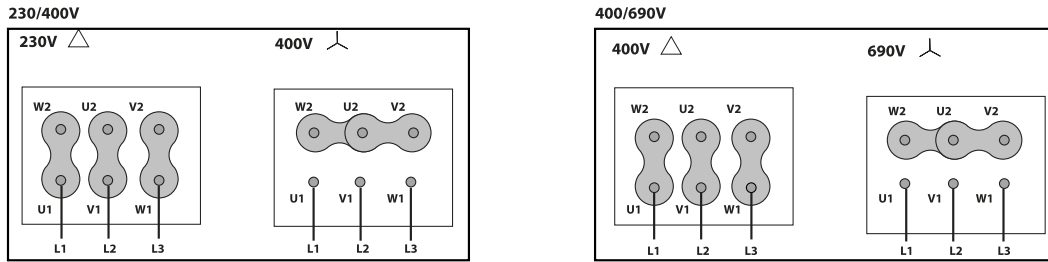
## DIMENSIONS



### Dimensions (mm)

A	1270	B	922	C	1279,5	D	561,5	E	479,5
F	30	G	1178,6	H	822	I	29	K	1456
L	1376	M	1211	N	60	O	92	P	350,5

## WIRING DIAGRAM



## ACCESSORIES



**INLET/OUTLET ROUND COVER  
TIAC 6 (OUT)**  
REF: 960001356



**INLET/OUTLET ROUND COVER  
TIAC 11 (IN)**  
REF: 960001361



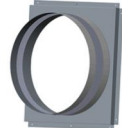
**OUTDOOR FLANGE WITH BIRD GUARD  
VIS OUT 18**  
REF: 960000054



**INLET BLIND COVER  
TCA 16**  
REF: 960001131



**METALLIC GRAVITY SHUTTER FOR CABINET  
FANS. CERTIFIED 400°C/2H  
PI 47/47 (18/18)**  
REF: 970470100



**RECTANGULAR-CIRCULAR ANTI-VIBRATION  
FLANGE  
BAC 6 (OUT 18/18)**  
REF: 960002956



**RECTANGULAR-CIRCULAR ANTI-VIBRATION  
FLANGE  
BAC 11 (IN BVFC 18/18)**  
REF: 960002961



**FREQUENCY SPEED CONTROLLER  
SFC (GENERIC)**



**SAFETY SWITCH  
INT (GENERIC)**

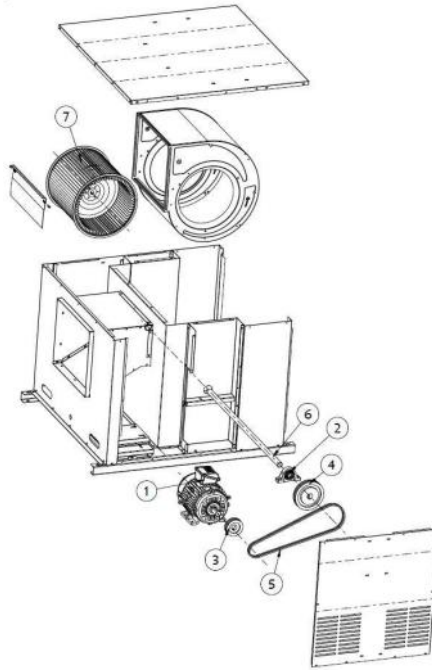


**ANTI-VIBRATION RUBBER BLOCK  
AVR (GENERIC)**



**ANTI-VIBRATION SPRING BLOCK  
AVS (GENERIC)**

**SPARE PARTS**



	Code	Model	Qty
2	712919135	BEARING COLL.EXC. NP35 C3-120°C	x2
6	242452112	SHAFT BVFC18/18	x1
7	R-242459382	TURBINE BVFC 18/18 D.35	x1
8	R-242458493	BOX (WITHOUT MOTOR NOR TRANSMISSION) BVFC 18/18	x1