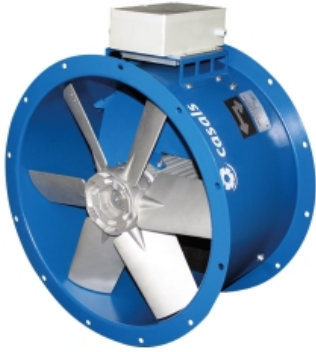


HCA EVO 56 EEC (277569540AEC)

GENERAL DATA



SHORT CASE VARIABLE PITCH BLADES WITH EEC MOTOR

MANUFACTURING FEATURES

- Short case axial fan with reinforced body, with double flange, made of rolling steel sheet.
- Pad mounted motor support system with guide vanes.
- Polyester powder finishing coat.
- Low sound level and high performance.
- PM brushless motor (permanent magnets), synchronous, electronically commutated, high efficiency and low sound level. Specially designed for fans with electronic operation and control in deported box IP65.

Working range: from 400 to 1200-2000rpm (depending on the models)

Motor with IP54 protection and class F insulation. IP 65 drive case

Power: 220V \pm 10% single phase

Power frequency: 50 / 60Hz

Operating temperature range (electrical box): -20°C to 50°C

Speed control through signal 0-10V or PWM

Cast aluminium impeller with variable pitch angle (Stopped and in origin).

APPLICATIONS

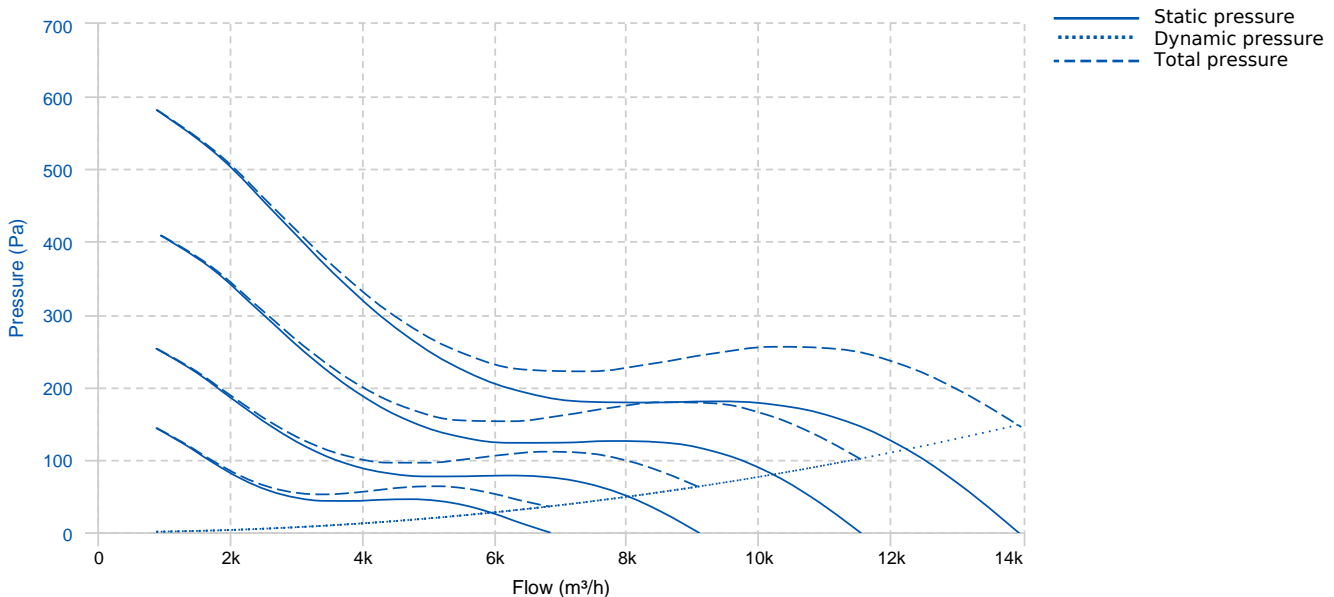
Designed for inline installation, they are suitable for

- Air renewal in buildings and industries.
- Smoke extraction.
- Maximum transported air temperature: 50°C.

UNDER REQUEST

- Casing in hot galvanized sheet or stainless steel.

PERFORMANCE CURVE



TECHNICAL DATA

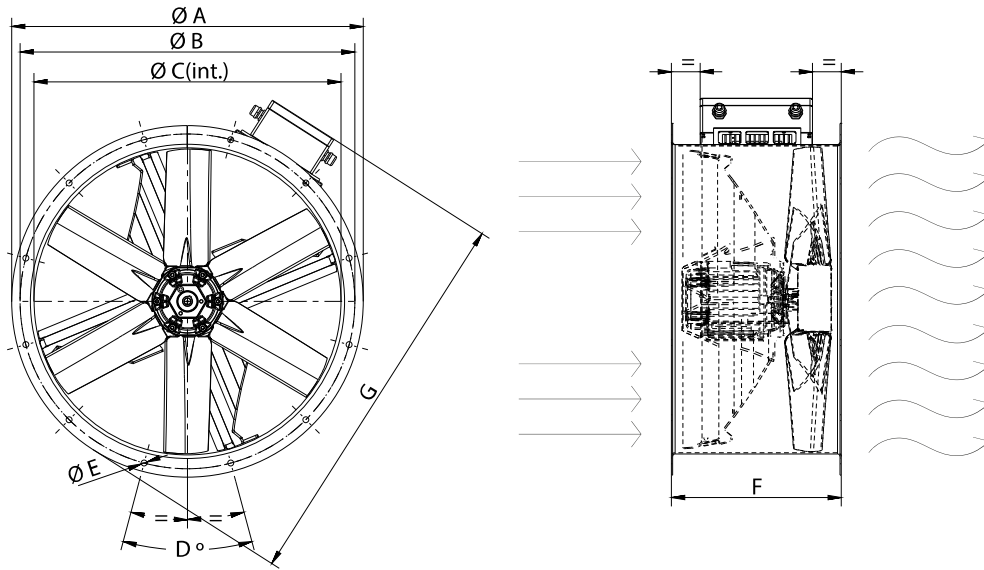
Fan

Approx. weight 43.5 kg Max. Flow 13970 m³/h

Motor

Power 1,5 kW RPM 1500 I max. (230V) 10 A Approx. weight 0 kg

DIMENSIONS



Dimensions (mm)

A	646	B	620	C	559	D	12x30	E	12
F	350	G	727						

WIRING DIAGRAM

MOTOR OUTPUT
SALIDA MOTOR

The EC motor is three phase and the output of three phases is connected in this connection terminal.
El motor EC es trifásico y la salida de las 3 fases del mismo se conectan a este terminal de conexión.

CONTROL-0-10 INPUT
CONTROL-0-10 ENTRADA

The fan is adjustable in rpm and has a variable input from 0 to 10V.
You can connect any accessory or external device that gives this variable signal (for example: temperature sensor, inverter, etc.). In case you want to operate the fan at maximum revolutions, you should connect VSP (0-10V) and +12 directly.
El ventilador es regulable en RPM y tiene una entrada variable de 0 a 10V.
Se puede conectar algún accesorio o dispositivo externo que dé esta señal variable (por ejemplo, sensor de temperatura, variador, etc.). En caso de que se quiera hacer funcionar el ventilador a máximas revoluciones se debe conectar directamente VSP (0-10V) y +12.

POWER INPUT (230V)
ENTRADA DE ALIMENTACIÓN (230V)

In this other terminal, the power input must be connected with the L (line), N (neutral) and single phase PE (ground).
En este otro terminal se debe conectar la entrada de alimentación con la L (línea), N (neutro) y PE (tierra) monofásica.

ACCESSORIES



**SAFETY SWITCH
INT 25 3P A
REF: INT253PA**



**PROTECTION GUARD FOR LONG CASE AXIAL
FANS
RP 56
REF: 960330100**



**CASE FANS MOUNTING SUPPORT
PO 56
REF: 960001657**



**CONNECTION FLANGE
AC 560
REF: 960003215**



**ANTI-VIBRATING FLANGE 400^ø/2H
BA-400 56
REF: 960002056**



**SPEED CONTROLLER FOR EEC MOTOR
REGC
REF: FX263300**



**CIRCULAR SILENCER
SIL-C 560/560
REF: 960056056**



**CIRCULAR SILENCER
SIL-C 560/840
REF: 960056084**



**CIRCULAR SILENCER
SIL-C 560/1120
REF: 960056112**



**CIRCULAR SILENCER
SIL-CN 560/560
REF: 961056056**



**CIRCULAR SILENCER
SIL-CN 560/840
REF: 961056084**

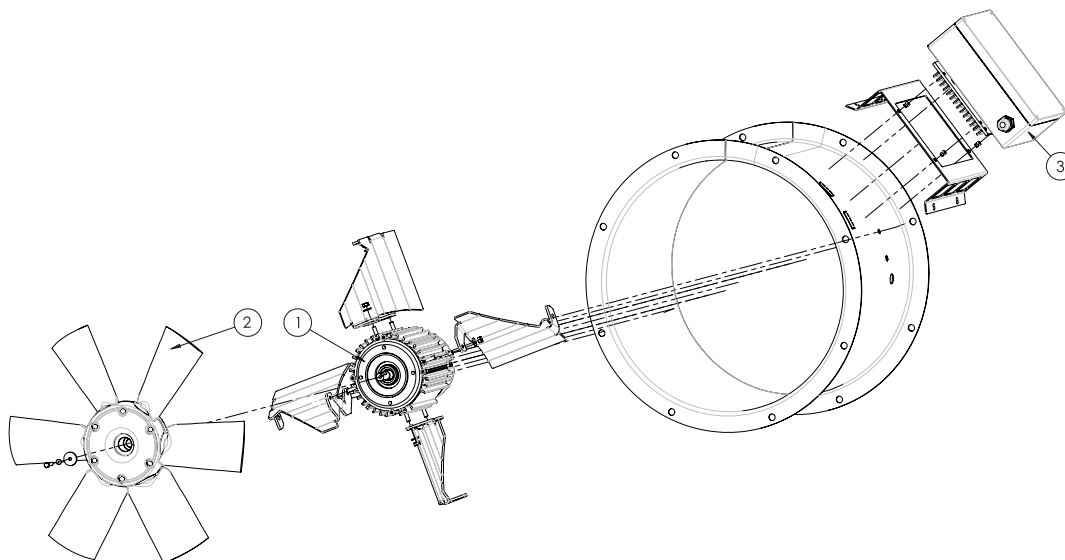


**CIRCULAR SILENCER
SIL-CN 560/1120
REF: 961056112**



**CIRCULAR-CIRCULAR ANTI-VIBRATION FLANGE
BAD 14 (Ø560)
REF: 960003464**

SPARE PARTS



	Code	Model	Qty
1	301002200IEC4	MOTOR EEC1500 IEC	x1
2	R-H56056340AIMP	IMPELLER 560:AA5:6 G40 D19 IMP	x1
3	301002204R150	ELECTRONICAL DEVICE EEC1500 1500rpm	x1