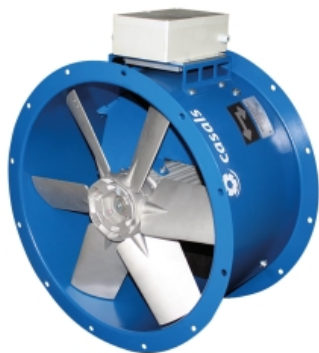


HCA EVO 63 EEC (277639535AEC)

GENERAL DATA



SHORT CASE VARIABLE PITCH BLADES WITH EEC MOTOR

MANUFACTURING FEATURES

- Short case axial fan with reinforced body, with double flange, made of rolling steel sheet.
- Pad mounted motor support system with guide vanes.
- Polyester powder finishing coat.
- Low sound level and high performance.
- PM brushless motor (permanent magnets), synchronous, electronically commutated, high efficiency and low sound level. Specially designed for fans with electronic operation and control in deported box IP65.

Working range: from 400 to 1200-2000rpm (depending on the models)

Motor with IP54 protection and class F insulation. IP 65 drive case

Power: 220V \pm 10% single phase

Power frequency: 50 / 60Hz

Operating temperature range (electrical box): -20°C to 50°C

Speed control through signal 0-10V or PWM

Cast aluminium impeller with variable pitch angle (Stopped and in origin).

APPLICATIONS

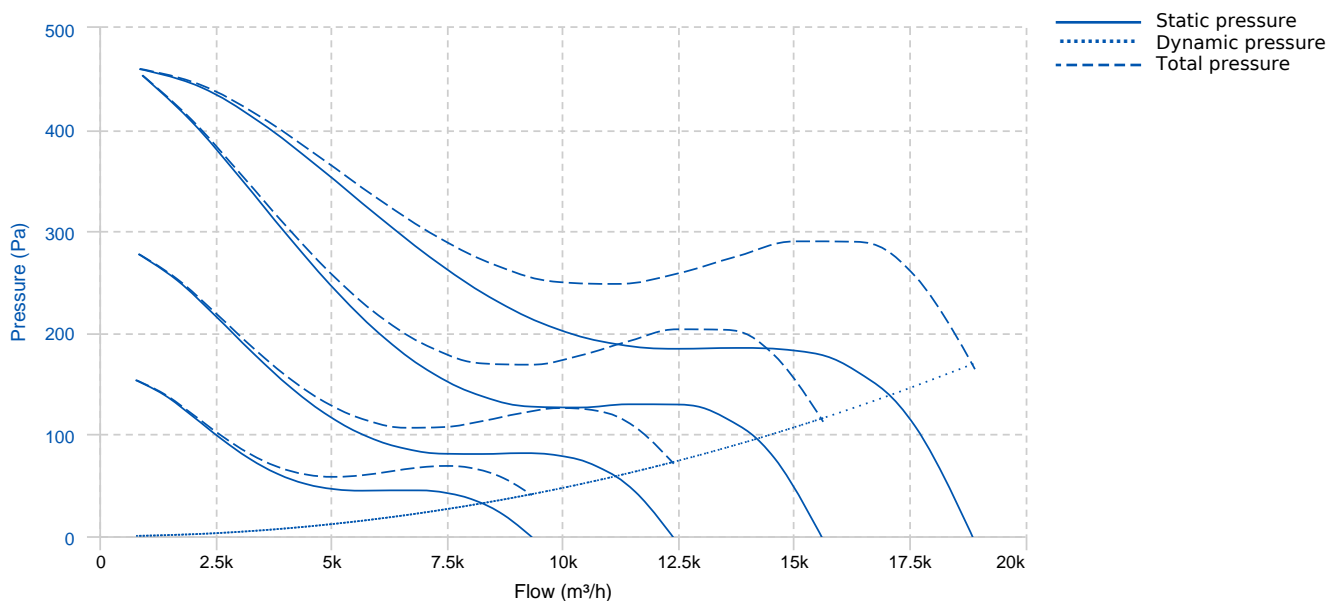
Designed for inline installation, they are suitable for

- Air renewal in buildings and industries.
- Smoke extraction.
- Maximum transported air temperature: 50°C.

UNDER REQUEST

- Casing in hot galvanized sheet or stainless steel.

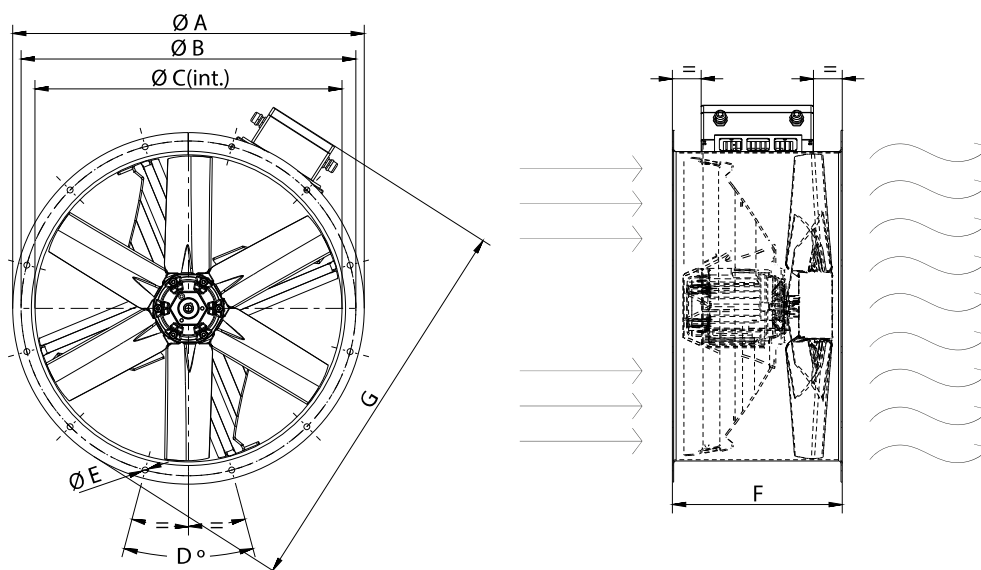
PERFORMANCE CURVE



TECHNICAL DATA

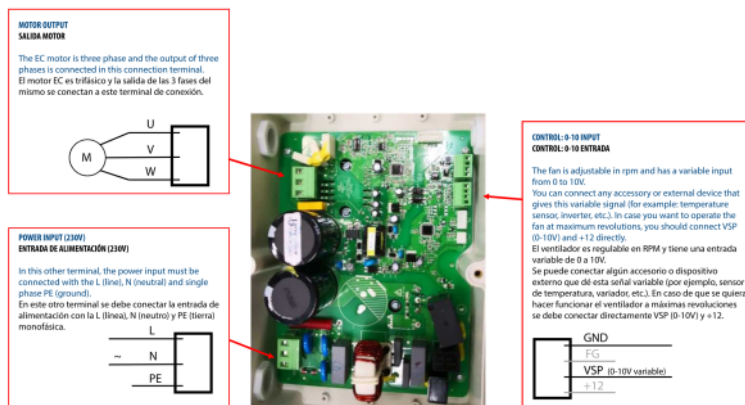
Fan							
Approx. weight	53.5 kg	Max. Flow	18910 m ³ /h				
Motor							
Power	1,5 kW	RPM	1500	I max. (230V)	10 A	Approx. weight	0 kg

DIMENSIONS



Dimensions (mm)									
A	725	B	690	C	633	D	12x30	E	12
F	350	G	806						

WIRING DIAGRAM



ACCESSORIES



**SAFETY SWITCH
INT 25 3P A
REF: INT253PA**



**PROTECTION GUARD FOR LONG CASE AXIAL
FANS
RP 63
REF: 960330101**



**CASE FANS MOUNTING SUPPORT
PO 63
REF: 960001658**



**CONNECTION FLANGE
AC 630
REF: 960003216**



**ANTI-VIBRATING FLANGE 400^ø/2H
BA-400 63
REF: 960002057**



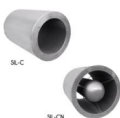
**SPEED CONTROLLER FOR EEC MOTOR
REGC
REF: FX263300**



**CIRCULAR SILENCER
SIL-C 630/630
REF: 960063063**



**CIRCULAR SILENCER
SIL-C 630/945
REF: 960063945**



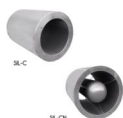
**CIRCULAR SILENCER
SIL-C 630/1260
REF: 960063126**



**CIRCULAR SILENCER
SIL-CN 630/630
REF: 961063063**



**CIRCULAR SILENCER
SIL-CN 630/945
REF: 961063945**



**CIRCULAR SILENCER
SIL-CN 630/1260
REF: 961063126**



**CIRCULAR-CIRCULAR ANTI-VIBRATION FLANGE
BAD 15 (Ø630)
REF: 960003465**