

# HJBM 40 0,37kW EEC (1420rpm) (268401103)

## GENERAL DATA



WALL MOUNTED FAN WITH SQUARE FRAME, VARIABLE PITCH BLADES AND ELECTRONIC MOTOR

### MANUFACTURING FEATURES

- Square plate made of galvanized steel sheet.
- Variable pitch angle polyamide impeller reinforced with fibreglass.
- Supplied with motor support and protection guard according to the ROHS 2002/95/EC Directive (Restriction of the Use of Certain Hazardous Substances in Electrical and Electronic Equipments).
- PM brushless motor (permanent magnets), synchronous, electronically commutated, high efficiency and low sound level. Specially designed for fans with electronic operation and control in deported box IP65.

Working range: from 400 to 1200-2000rpm (depending on the models)

Motor with IP54 protection and class F insulation. IP 65 drive case

Power: 220V  $\pm$  10% single phase

Power frequency: 50 / 60Hz

Operating temperature range: -20°C to 50°C

Speed control through signal 0-10V or PWM

### APPLICATIONS

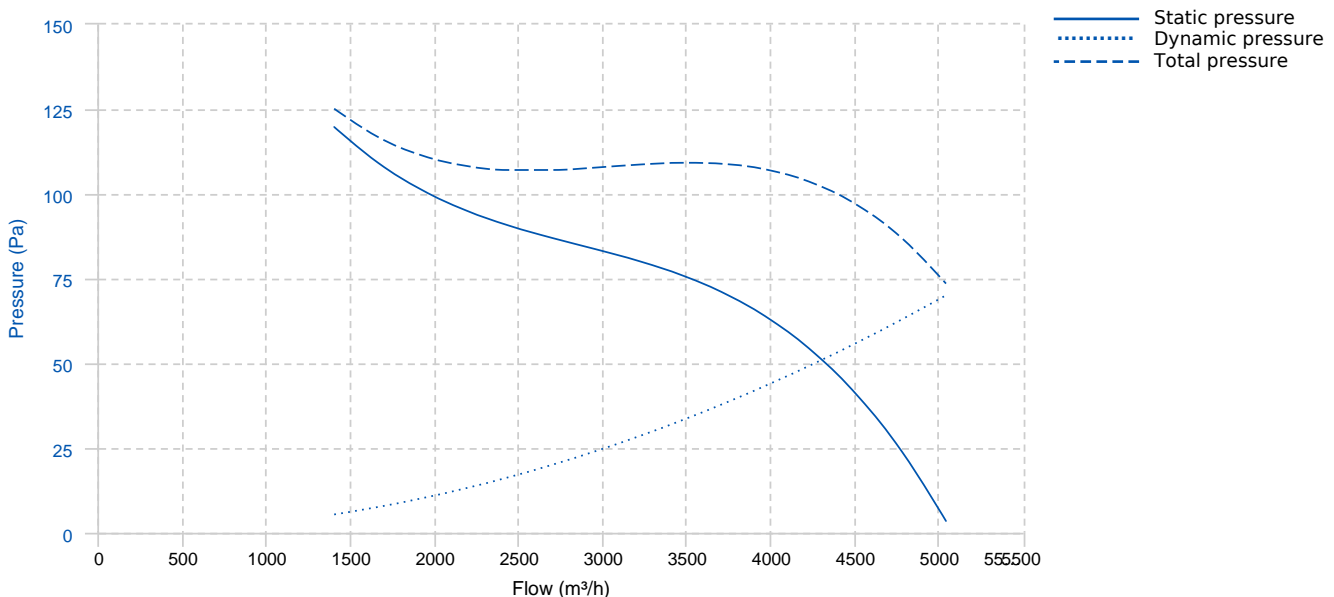
Designed for wall assembly, they are suitable for:

- Air renewal for all kind of buildings and industries.

### UNDER REQUEST

- B form impeller (air flow from impeller to motor).
- Aluminium impeller.

## PERFORMANCE CURVE

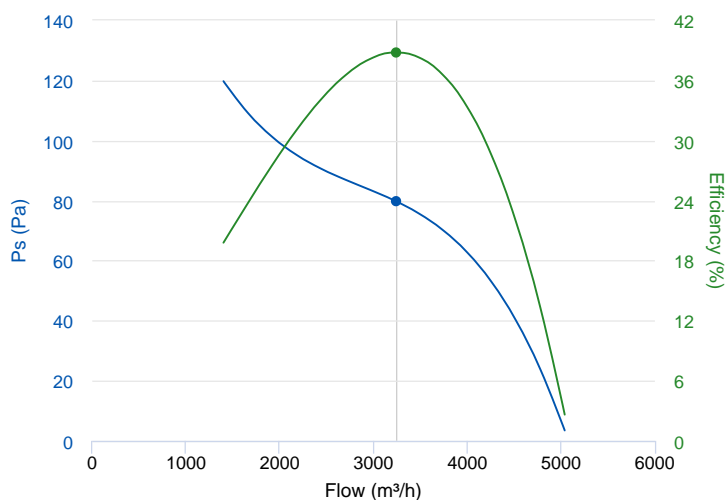


## TECHNICAL DATA

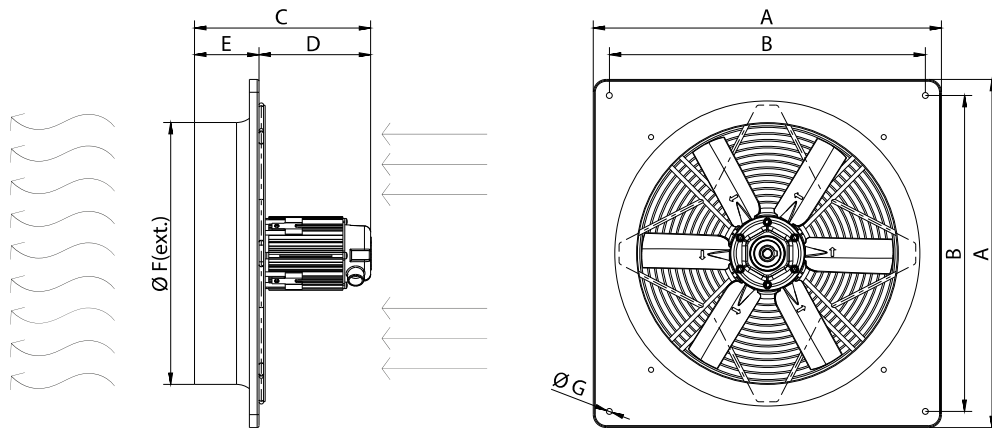
Fan							
RPM	1420	Approx. weight	9 kg	Max. Flow	5040 m <sup>3</sup> /h		
Motor							
Power	0,37 kW	RPM	1420	I max. (230V)	5 A	Approx. weight	0 kg

## ERP DATA

Fan data sheet		
Fan type	Axial fan	
Installation category	A: Outlet and Inlet free discharge	
Efficiency category	Static	
The fan has to be installed with VF	No	
Motor power (kW)	0.37	
	Fan values	ERP Requirements 2015
Max. efficiency (%)	38.8	29.22
Efficiency grade (N)	49.58	40
Pabs (kW)	0.197	
Flow (m <sup>3</sup> /h)	3246.54	
Static pressure (Pa)	79.7	
Speed (m/s)	1420	
Specific ratio	1.00	



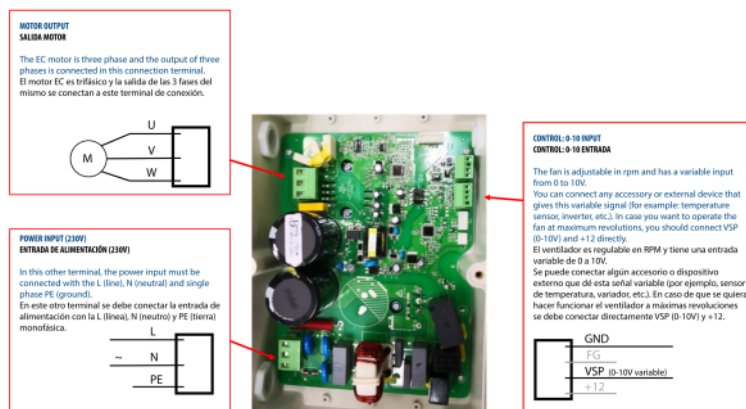
## DIMENSIONS



### Dimensions (mm)

A	540	B	504	C	313	D	213	E	100
F	406	G	9						

## WIRING DIAGRAM



## ACCESSORIES



**SAFETY SWITCH**  
**INT 25 3P A**  
**REF: INT253PA**



**Outlet protection guard for axial fans**  
**RPO 40**  
**REF: 980000040**



**PLASTIC GRAVITY SHUTTER**  
**PCP 40**  
**REF: 963230106**

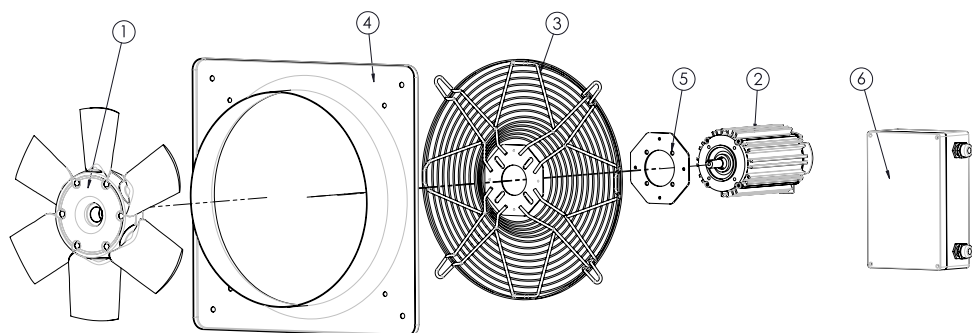


**SPEED CONTROLLER FOR EEC MOTOR**  
**REGC**  
**REF: FX263300**



**ALUMINIUM GRAVITY SHUTTER**  
**PC2 40**  
**REF: PC24040**

## SPARE PARTS



	Code	Model	Qty
1	R-H40006335PSTD	IMPELLER 400:AP0:6 G35 D19	x1
2	301002000IEC4	MOTOR EEC0,37kW	x1
3	R-268401902	PROTECTION GRID HJBM40	x1
4	R-268401779A001	FRAME HJBM-HJBM EEC40	x1
5	R-268401909	SUPPORT MOTOR DISC HJBM25-30-35-40 T.63	x1
6	301002004R142	ELECTRONICAL DEVICE EEC370 1420rpm	x1