

JFC 355 T2/T4 UN CONFORT (274350298ST)

GENERAL DATA



CIRCULAR AXIAL JET FAN CONFORT

MANUFACTURING FEATURES:

The JFC CONFORT models are composed of an axial fan and two silencers.

FAN:

- Axial fan with reinforced tubular casing, made of steel sheet. The connection box is accessible by the side from a removable door.
- Standard asynchronous squirrel-cage motor with IP-55 protection and Class F insulation. Standard voltages 230/400V 50Hz for 1 speed motors and 400V 50Hz for 2 speed motors.

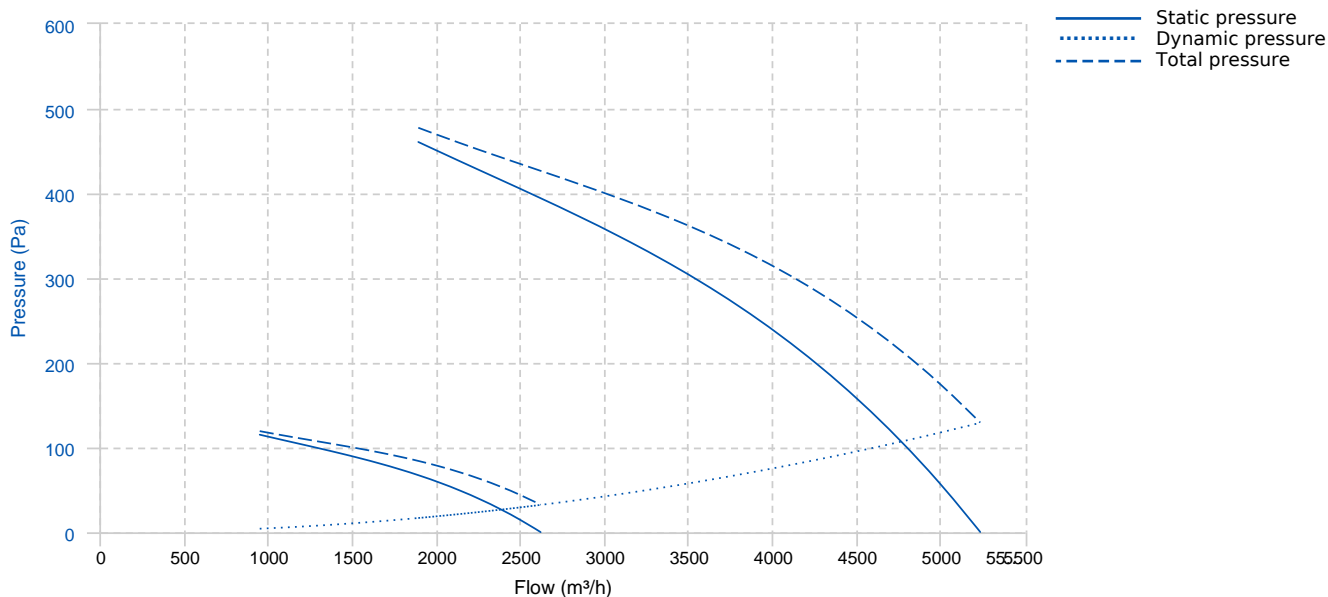
SILENCERS:

- Casing in galvanized steel. Inner duct made of perforated galvanized steel sheet.
- The silencers are filled with mineral wool with high acoustic absorption properties, preventing most of the fan noise to be propagated.
- Unidirectional JFC CONFORT UN is equipped with a protection guard at the inlet side and a deflector at the outlet. The deflector directs the air away from the ceiling and obstacles like beams or ducting, sweeping the whole volume of air to the closest extraction point.
- Reversible JFC CONFORT RE is equipped with protection guards on both sides.

APPLICATIONS:

- Conceived for car parkings and large spaces where polluted air, needs to be removed effectively.
- An optimized design minimizes the height needed for their installation and assures a silent operation.
- Maximum working temperature: 60°C.

PERFORMANCE CURVE



TECHNICAL DATA

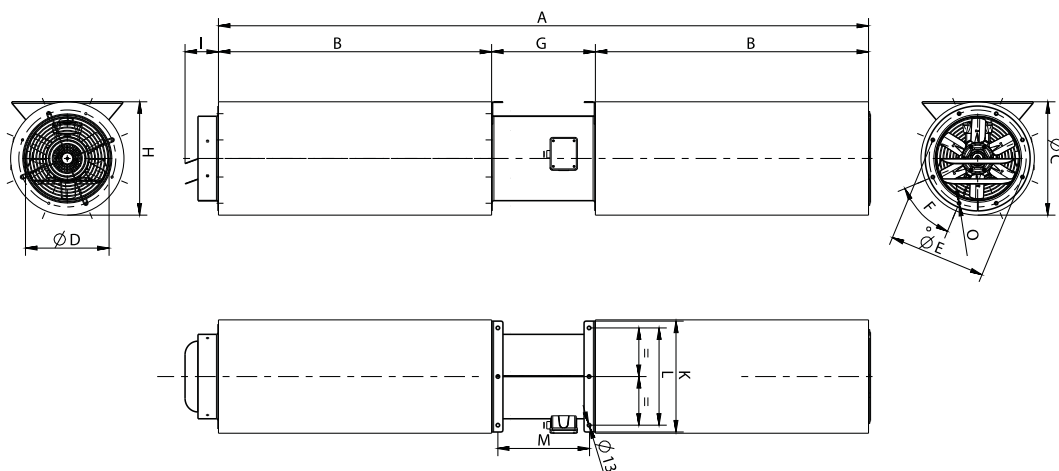
Fan

Approx. weight	99 kg	Max. Flow	5240 m³/h
----------------	-------	-----------	-----------

Motor

Power	0,55/0,12 kW	RPM	2850/1430	I max. (400V)	1,45/0,47 A	Size	71
Approx. weight	7.5 kg	Efficiency (%)	60.7/57.8 %	FP	0.77/0.78		

DIMENSIONS



Dimensions (mm)

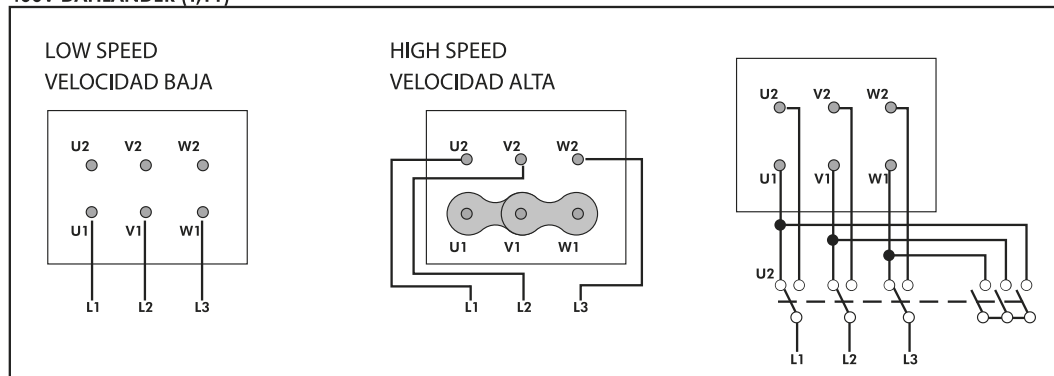
A	1833,5	B	720	F	8x45°	G	393,5	H	455
I	122	K	461	L	411	M	345,5	O	M8

Dimensions (mm)

Thrust (N)	26,6	ØC	455	ØD	361	ØE	395
------------	------	----	-----	----	-----	----	-----

WIRING DIAGRAM

400V DAHLANDER (Y,YY)



ACCESSORIES



SAFETY SWITCH
INT 25 6P A
REF: INT256PA



CEILING ANTI-VIBRATION SPRING BLOCK
AVT (GENERIC)